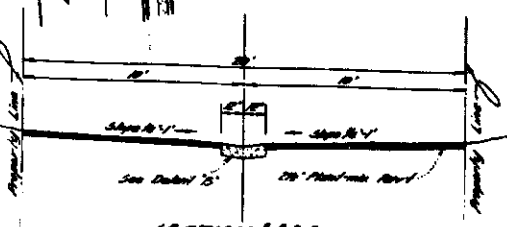
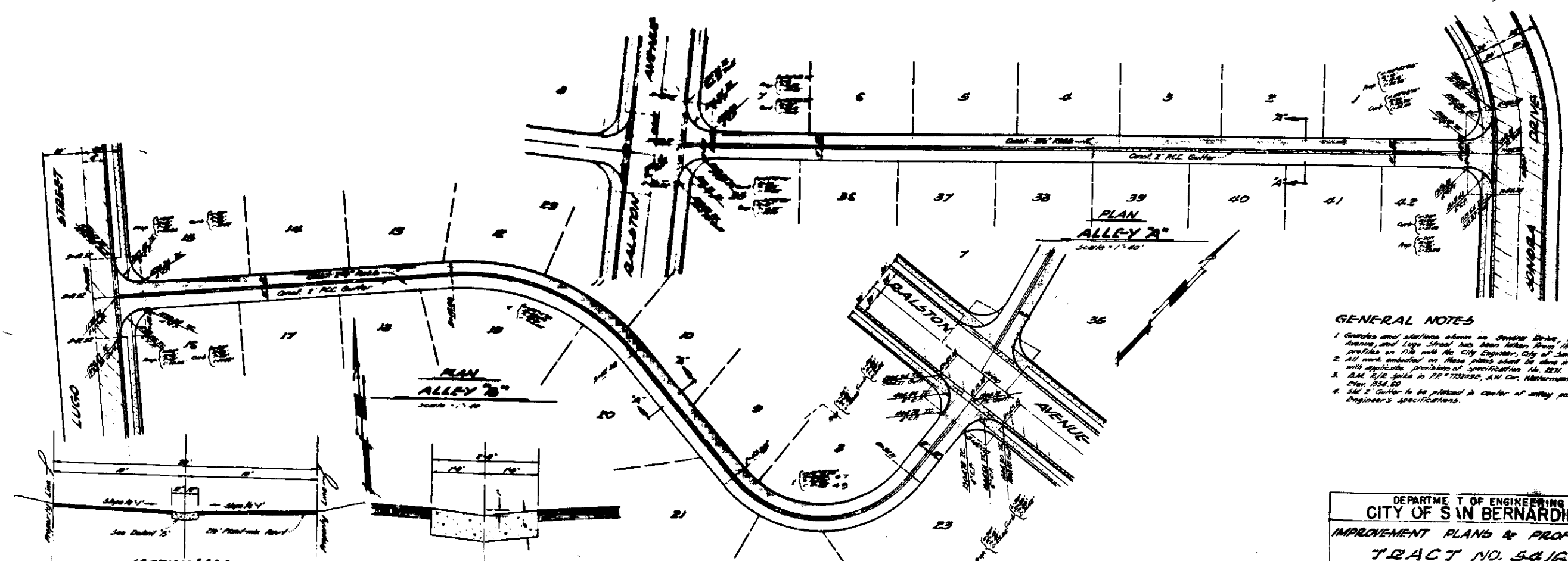
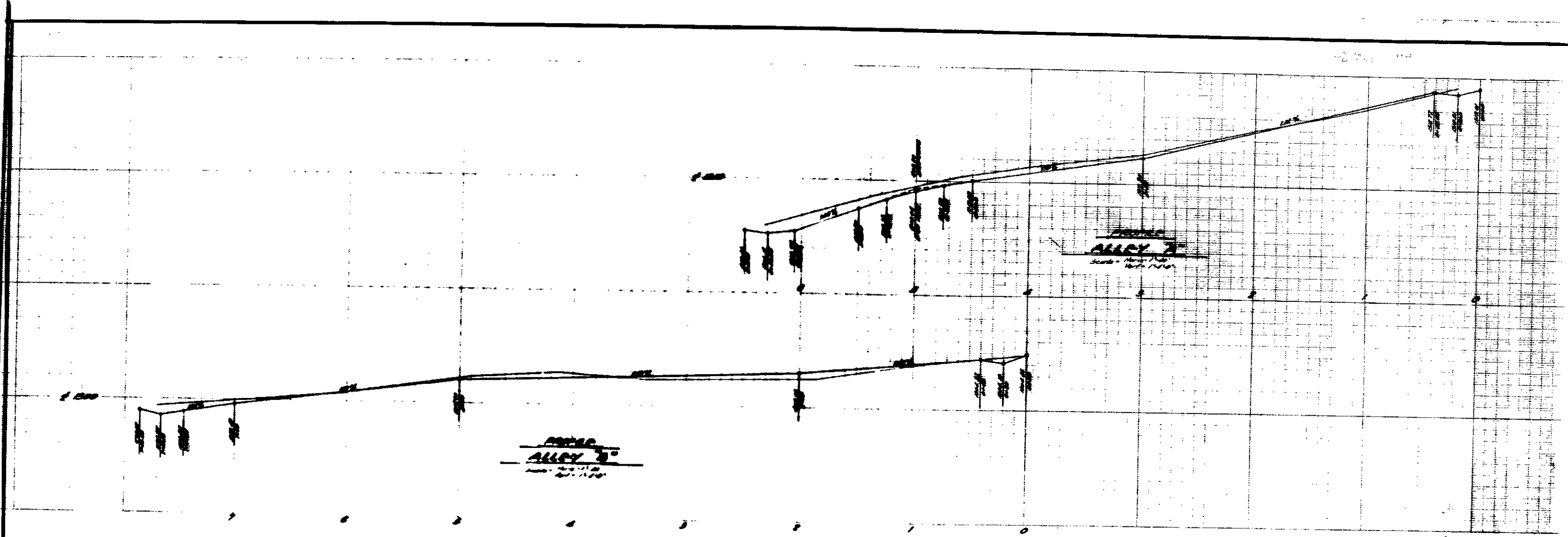


- GENERAL NOTES**
1. Grades and stations shown on San Diego Drive, Ruben Avenue, and Lugo Street has been taken from the approved profiles on file with the City Engineer, City of San Bernardino.
 2. All work indicated on these plans shall be done in conformity with applicable provisions of specification No. 227.
 3. All R/W shall be in accordance with the City Engineer's specifications and the City Engineer's specifications.
 4. All 2' gutter to be placed in center of alley per city Engineer's specifications.

DEPARTMENT OF ENGINEERING
 CITY OF SAN BERNARDINO
 IMPROVEMENT PLANS & PROFILES
 TRACT NO. 5416



- GENERAL NOTES**
1. Grades and stations shown on Sanborn Drive, Ruben Avenue, and Lugo Street has been taken from the approved profiles on file with the City Engineer, City of San Bernardino.
 2. All work indicated on these plans shall be done in conformity with applicable provisions of specifications No. 227.
 3. 18" R/W pipe in DP 770222C, A.M. Co. Manufacture & do B. of City, 124, 02.
 4. 36" Gutter to be placed in center of alley per city Engineer's specifications.

DEPARTMENT OF ENGINEERING
 CITY OF SAN BERNARDINO
 IMPROVEMENT PLANS & PROFILES
 TRACT NO. 5416